

BJ55SY

REPLACES: 17.01.18
REVISED: 07.11.19

**KL JEEP CHEROKEE LIMITED 06/14-
(EXCEPT 2.5 PETROL WITH SHUTTER SYSTEM)
BIG TUBE PROTECTION BAR
VEHICLE FRONTAL PROTECTION SYSTEM (VFPS)
FOR AIR BAG & ADR COMPLIANT VEHICLES**

NOTE FOR THE VEHICLE OWNER:

CAUTION: WHEN TOWING THIS VEHICLE, USE A JOINER STRAP BETWEEN THE TOW HOOKS TO DISTRIBUTE THE WEIGHT EVENLY ACROSS THE FRONT OF THE VEHICLE.

FAILURE TO DO THIS MAY CAUSE DAMAGE TO THE ECB PROTECTION BAR AND THE VEHICLE.



BJ55SY

REPLACES: 00.00.00
REVISED: 17.03.15

FITTING INSTRUCTIONS

KL JEEP CHEROKEE LIMITED 06/14- (EXCEPT 2.5 PETROL WITH SHUTTER SYSTEM) BIG TUBE PROTECTION BAR VEHICLE FRONTAL PROTECTION SYSTEM (VFPS) FOR AIR BAG & ADR COMPLIANT VEHICLES

Check installation hardware before commencing.

NOTE: For fitment of Protection bar, vehicle may need to be driven above 30 KPH to reset computer to allow for parking sensor wiring extensions.

1. Lift bonnet.
2. Remove top cover trim from between park lights.
3. Remove three 8 mm head screws from front of wheel arch per side, remove 2 alloy rivets from chin spoiler per side, remove four 10 mm head bolts from underside of bumper. Pull outwards on wheel arch flair whilst unclipping from inside of wheel arch. Remove one 10 mm head bolts from rear wing where it meets guard per side. Remove two 10 mm head bolts from outer grille opening per side **see figure 1**. Unplug bumper wiring harness from behind LH headlight. Pull out on rear wing to unclip bumper from bumper locator and remove bumper.
4. Remove four 15 mm head bolts from end of chassis rail and one 10 mm head nut per side and remove bumper reinforcement.
5. Using ECB steel mounting brackets (supplied) as a guide measure in from outside edge of bumper reinforcement 160 mm, align top edge of mount with reinforcement and drill four 10 mm holes through alloy channel per side. Affix with M10 x 65 bolts, flat washers, spring washers and nuts (supplied). **See figure 2**.
6. Refit bumper support to vehicle.
7. Remove two christmas tree clips from lower air dam L/H and R/H side so drill can access lower front hole in mount. Drill two 10 mm holes into alloy crash can. **See figure 3**.
8. Install one M10 x 35 bolt, flat washer, spring washer and nut per side (supplied) into lower hole of mount.
9. Remove two 15 mm head bolts and one 10 mm head nut from outside of crash can per side and fit ECB steel tie down (supplied) using original bolts. Drill 10 mm hole through front hole in tie down and fit 3/8 x 4 ½ bolt, steel tube spacer, flat washers, spring washer and nuts (supplied). Note: Front hole in outer plate should align with rear hole on inside mount. Spacer is installed from front of tube. **See figure 4**.
10. Align and square steel mount to front of vehicle and tighten all bolts.
11. Trim plastic bumper stiffener to fit around steel mounts. **See figure 5**.
12. Install quick click harness to parking sensor plug.
13. Remove grille and chrome surround from bumper and trim to allow steel mounts to protrude through. **See figure 6**.

14. Refit grille and chrome surround to bumper.
15. Remove original equipment fog lights and wiring harness from bumper.
16. Refit bumper to vehicle as per reverse of steps 2 and 3. Install two plastic plugs into outer parking sensor holes in plastic bumper. Do not refit inner guards at this stage.
17. Install original equipment harness into rear of Protection bar using zip ties (supplied). Connect ECB Quick Click fog light harness (supplied) into original equipment wiring harness.
18. Install and adjust parking sensors into rear of Protection bar. Parking sensor fits through parking sensor mount, mount is then fitted to lower leg of protection bar using M6 x 20 bolts, flat washers and nyloc nuts. By twisting mount, pressure can be applied to rear of parking sensor in hole. Install zip tie around mount and parking sensor to ensure firm fitment. Should vehicle not have parking sensors, insert black plastic blanking plugs into hole using a plastic hammer or similar to not damage plugs.
19. Attach 6mm clip lock trim (supplied) to top of ECB protection bar. **NOTE:** Trim off lower edge on an angle so trim will sit flush with end of protection bar. **See figures 7, 8 and 9.**
20. Attach 6mm clip lock trim (supplied) to lower skirt cut out of ECB protection bar. **NOTE:** Trim off rear edge on an angle so trim will sit flush with join to protection bar.
21. Attach ECB fog lights to protection bar. Place M6 x 20 bolts, spring washers (supplied) through light mount from inside and attach nut to top. Slide assembly into light mount in Protection bar and centralize light to hole. **TIGHTEN FIRM ONLY. See figure 10.**
22. Fit ECB protection bar to ECB steel mounting system using M12 x 1.75 x 40 bolts, flat washers, spring washers and nuts (supplied). Finger tighten only.
23. Align ECB protection bar to vehicle. **See figures 11 and 12. Tighten all bolts.**
24. Connect wiring harness and test for correct operation. **NOTE:** vehicle may need to be driven above 30 KPH to reset computer to allow for wiring extensions. Complete installation of inner guards. Where rivets were removed from chin spoilers, fit using plastic screw clips supplied.

ENSURE NUMBER PLATE IS CLEARLY VISABLE

Note: When fitting/refitting the licence plate to the vehicle, ensure there is no obstruction to licence plate vision in accordance with local authorities. If required relocate licence plate to an alternate location.

Further VFPS Notes:

- a) Do not attach VFPS to the vehicle using anchorages not intended for this purpose (e.g. engine mounting bolts).
- b) Do not use this product for any vehicle make or model, other than those specified by the VFPS manufacturer.
- c) Do not remove the plaque or label from the VFPS.
- d) Do not modify the structure of the VFPS in any way.
- e) No accessory or fitment should project forward of the VFPS forward profile.
- f) **ENSURE THESE INSTRUCTIONS ARE LEFT WITH VEHICLE OWNER AND/OR OPERATOR.**

IMPORTANT INFORMATION

Periodically check bolts and nuts for correct tightness, especially if travelling on rough roads

FITTING KIT

1 – Pair ECB steel mounting brackets	8 – M6 x 20 bolts
--------------------------------------	-------------------

1 – Pair ECB steel tow hooks	12 – M6 flat washers
2 – 10 Nb spacer tubes 67mm long	2 – M6 spring washers
6 – Parking sensor mount (BJ55SY A3AL)	6 – M6 nyloc nuts
6 – M12 x 1.75 x 40 bolts	2 – M6 nuts
12 – M12 flat washers	1 – ECB Fog light kit
6 – M12 spring washers	1 – ECB quick connect harness (IC13JECHPARH)
6 – M12 x 1.75 nuts	1 – ECB quick click fog harness (IC10D40S1004ECBH)
8 – M10 x 1.5 x 65 bolts	15 – 150mm zip ties
2 – M10 x 1.5 x 35 bolts	1 – 2300mm length 6mm clip lock trim
24 – M10 flat washers	2 – 500mm length 6mm clip lock trim
12 – M10 spring washers	4 – plastic screw clips (scrivet)
10 – M10 x 1.5 nuts	2 – 20mm black plastic blanking plug (ICINSERT20)
2 – 3/8 x 4 1/2 bolts	6 – 27mm black plastic blanking plug (ICRTRI5505)
2 – 3/8 nuts	

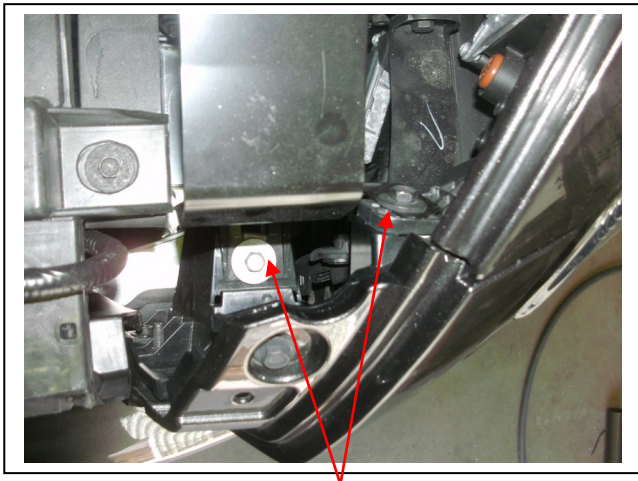


Figure 1



Figure 2



Figure 3

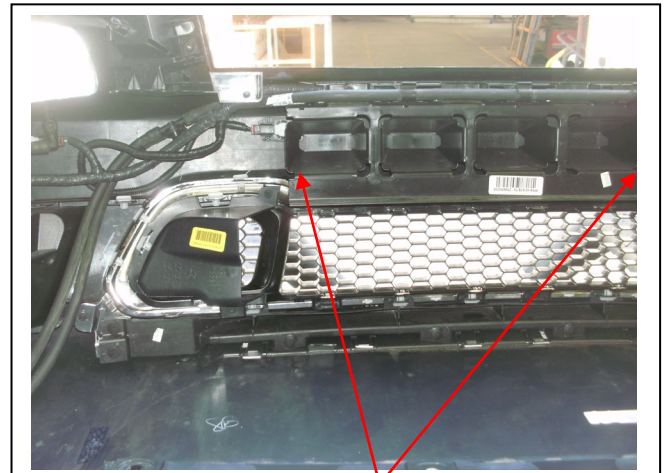


Figure 4

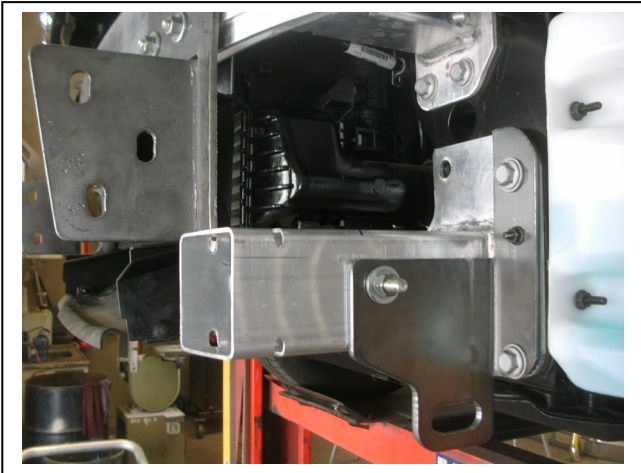


Figure 5



Figure 6

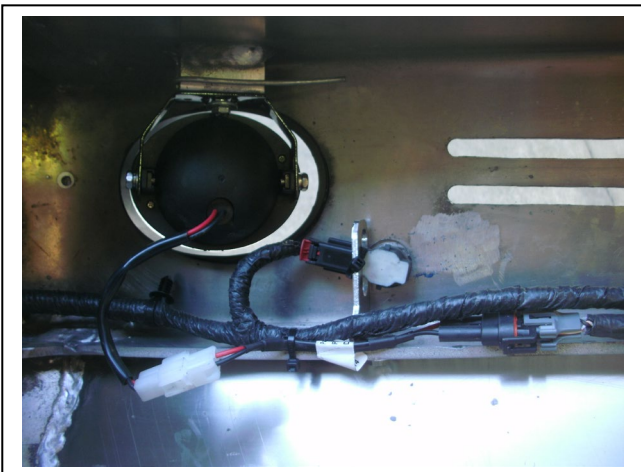


Figure 7



Figure 8

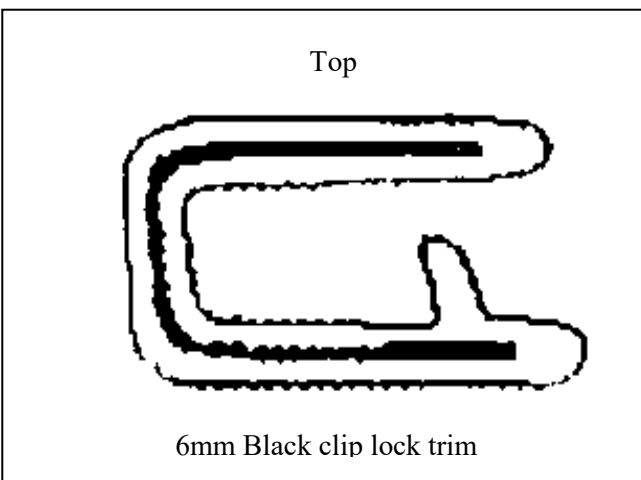


Figure 9

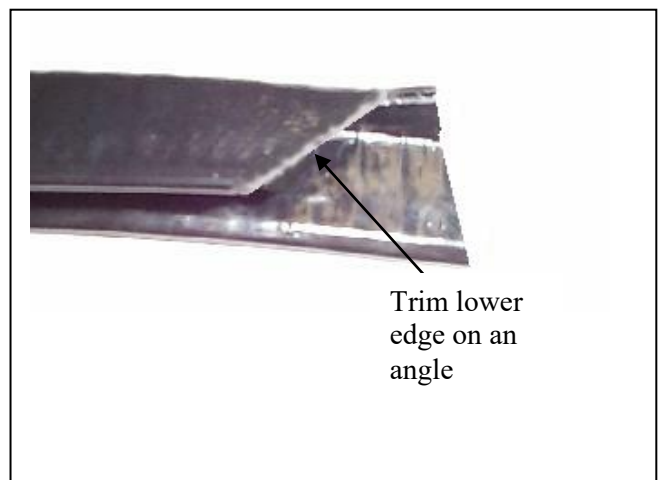


Figure 10

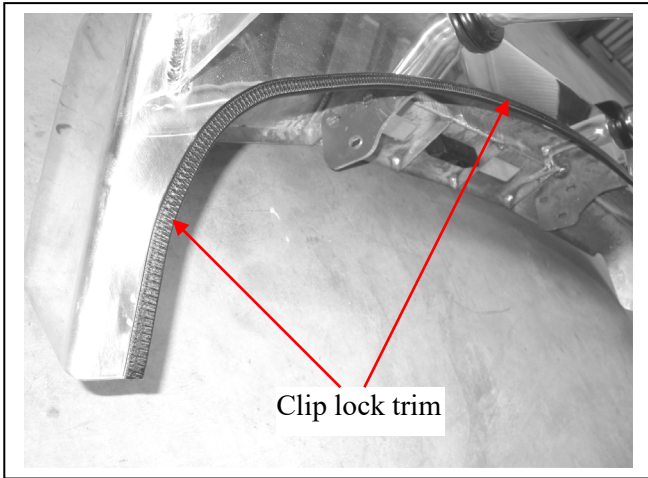
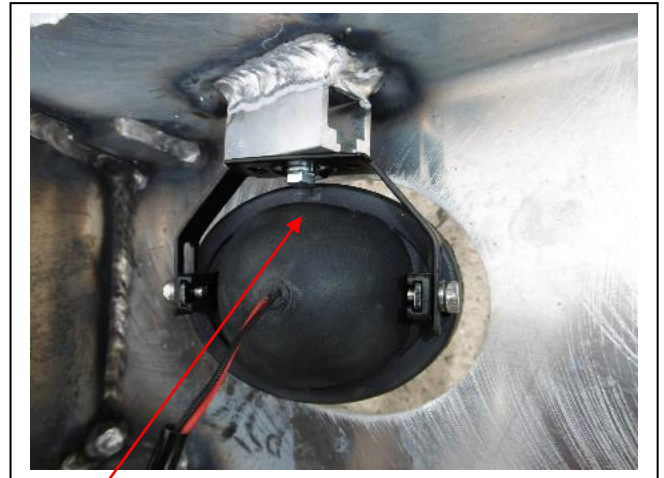


Figure 11



M6 bolt

Figure 12



Figure 13



Figure 14



**Lighter
Stronger
Better!**

A: 29 Snook St Clontarf QLD 4019
A: PO Box 122 Margate QLD 4019
P: 07 3897 5700
F: 07 3283 1168
E: info@ecb.com.au
W: ecb.com.au
W: customalloy.com.au



We value your comments

Dear Fitter,

ECB would like to know how you went with the installation of this product. We value your comment and may need to contact you to clarify some details so please complete your contact details clearly.

We would appreciate if you could complete as many of the following details as possible.

Your Name:	Your contact No.
Product Part No.	Product Invoice No.
Product Description:	Make, model, and year of vehicle:
Product Work Order No.	Company your from/Company product purchased from:

Date of Fitment: ____/____/____

Was the fitting hardware supplied complete?

Yes

No

If no what was not supplied

Did the installation go well?

Yes

No

Please provide comments

Please draw diagrams if you need to.

Post to
Reply Paid 122
PO Box 122
Margate QLD 4019

Fax to
(07) 3283 1168



**WORLD'S BEST
ALLOY BULLBARS**

**Lighter
Stronger
Better!**

A: 29 Snook St Clontarf QLD 4019

A: PO Box 122 Margate QLD 4019

P: 07 3897 5700

F: 07 3283 1168

E: info@ecb.com.au

W: ecb.com.au

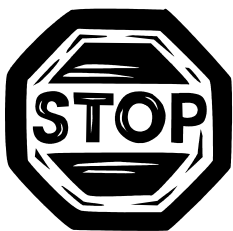
W: customalloy.com.au



DESPATCH CHECKLIST BJ55SY

Work Order #		See other side of this page for photos of all mounts
Finish:		
Transport:		
Due Date:		

- OC.....1 – PAIR Steel mounting brackets.
- OC.....1 – PAIR steel tow brackets
- BK.....1 – Bolt Kit.
- BK.....6 – parking sensor mounts (BJ55SY_A3AL)
- BK.....1 – ECB fog light kit
- BK.....1 – Quick click harness (IC13JECHPARH)
- BK.....1 – Quick click harness (IC10D40S1004ECBH)
- BK.....1 – 2300mm length 6mm clip lock
- BK.....2 – 500mm length 6mm clip lock
- OC.....2 – ECB Overrides – **Fitted to Bar**



Is this product “the best it can be” Yes
 If **NO** fix before continuing

_____/_____
Wrapper's initials / Checker initials

All parts checked and completed by:

Nut and bolts: _____ Date __/__/__

Order control: _____ Date __/__/__

Final wrap check: _____ Date __/__/__



**WORLD'S BEST
ALLOY BULLBARS**

**Lighter
Stronger
Better!**

A: 29 Snook St Clontarf QLD 4019
A: PO Box 122 Margate QLD 4019
P: 07 3897 5700
F: 07 3283 1168
E: info@ecb.com.au
W: ecb.com.au
W: customalloy.com.au



Wrapper's initials / Checker initials